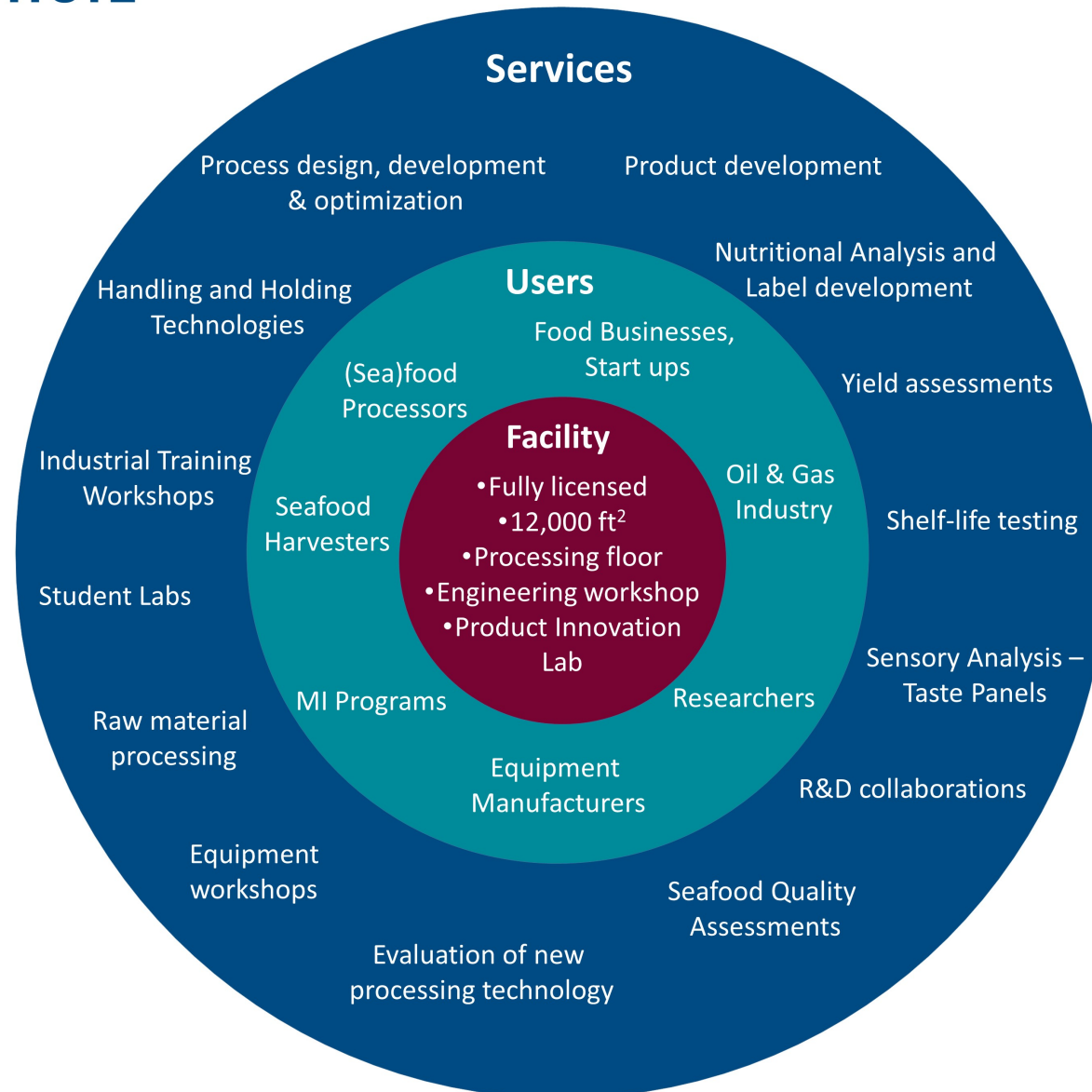




**MARINE INSTITUTE**

# Seafood Processing Pilot Plant

Centre for Aquaculture and Seafood Development





**MARINE INSTITUTE**

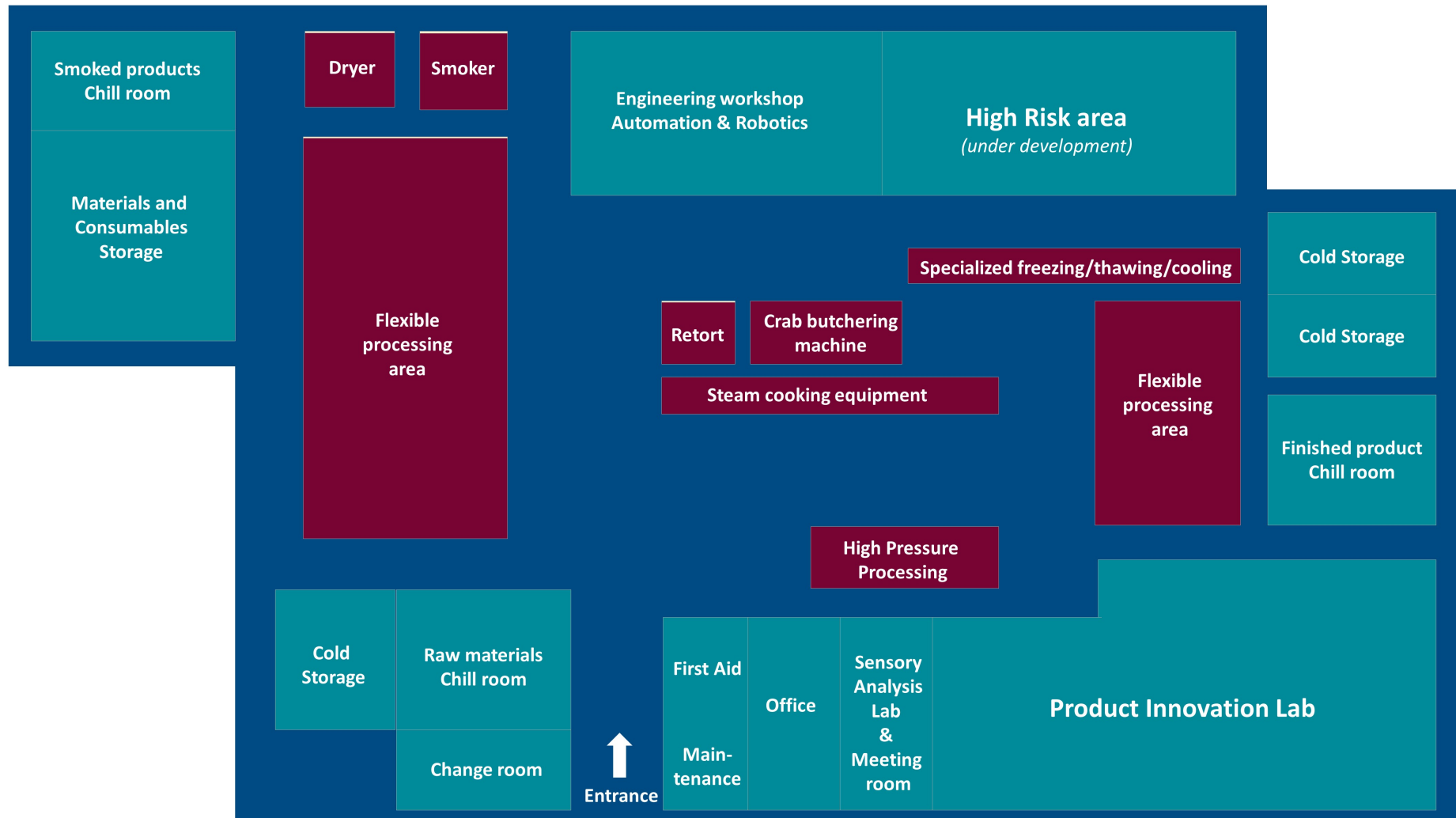
# Seafood Processing Pilot Plant

Centre for Aquaculture and Seafood Development (CASD)



1,100 m<sup>2</sup> processing area

Licensed food processing plant (federal & provincial)



## Equipment List

### Advanced Manufacturing

- NC Hiperbaric 55L High Pressure Processing Pilot Model
- Crab butchering Machine (MI Prototype)
- Crab leg cutting machine (Akiyama)
- Sea Cucumber gutting machine (MI Prototype)

### Processing

- ABCO skinner
- Crab butchering table
- Fish skinning machine, model 51 (Baader)
- Deboner, model 694 (Baader)
- Sieve shaker (Gilson)

### Thermoprocessing

- AllPax R & D Retort
- Static Batch retort (Water immersion)
- Continuous, forced convection steam cooker (Laitram)
- Ecklund-Harrison Thermocouple system
- Data Trace temperature Probes
- CalSoft 5 software (TechniCal)
- Can Seamer (Dixie)

### Smoking & Drying

- Atmos Smoker
- Doing Pilot Scale Dryer
- Scale Shop Food Dehydrator

### Mixing, Blending, Cutting & Grinding

- Vacuum Mixer (Stephan)
- Meat Grinder (Hobart)
- Industrial grinder (Monster Industrial)
- Commercial Mixer - Table Top Model (Hobart)
- Ultrasonic Hand Probe Cutter
- Bowl cutter
- Juicer (Robot Coupe)
- Blender (Robot Coupe)
- High speed vertical cutter machine (Robot Coupe)
- Band Saw
- Meat slicer (Berkel)
- Vacuum tumbler (Biro)

### Cooking

- “Self Cooking Centre” steam oven (Rationale)
- 100-gal steam kettle (Cleveland)
- 20-gal electric steam kettle (Cleveland)
- Steam Pressure Cooker (Gaunt)
- Commercial Convection Oven (Garland)
- Deep Fat Fryer

### Scales

- Floor scale (300 lbs)
- Newfoundland Scale (100 lbs)
- Transcell Scale (100 lbs)
- AND Scale (30 Kg)
- AND Scale (15 Kg)
- 2 x Ohaus portable scale (50 lbs)

### Forming, Filling, Packaging

- Pickle Injector (Pro)
- Patty Former (Patty-O-Matic)
- Sausage Stuffer (Talsa)
- Bread and batter machine (Bettcher)
- Ribbon Blender (AMB)
- Filling Machine (All-Fill)
- Tray Sealer (Sipromac)
- Smith Proportional Gas Blender (for MAP)
- Vacuum Packaging Machine (Sipromac)
- Vacuum Packaging Machine (Multivac)

### Analysis

- Sensory (Taste Panels)
- Seafood Quality Assessment
- TA.XT Plus texture meter
- Rapid Moisture Analyzer (O’Haus)
- pH measurement
- Salinity
- Conductivity

### Chilling & Freezing

- Commercial refrigerator
- Flake Ice Making Machine (Scotsman)
- Freezing & Thawing Chamber (CoolNova)
- Vertical Plate Freezer (Dole, 135 Kg/hr)
- Raw Material Walk-in Chiller (500 m<sup>2</sup>)
- Finished Products Walk-in Chiller (500 m<sup>2</sup>)
- Two walk-in cold storage units (500 m<sup>2</sup>)
- Mini blast freezer (HurraChill)